



# HIGHLIGHTS

## MUSICIAN & DJ



Designed in Germany,  
**heard**  
around the world!

**LD Systems® – Your Sound. Our Mission.**

As a user of professional audio technology, you are in good hands with LD Systems. Your enthusiasm is our benchmark. Whether you are a sound engineer, a mobile DJ, a musician, a band, a singer-songwriter, a wedding singer or fitness trainer or just a sound addict like us – your needs are at the heart of every decision we make.

We are passionate about developing professional audio solutions that make your life easier on the job and meet your high expectations for sound and performance.

Of course, we are also happy to support you beyond your purchase. With us, you'll experience some of the best customer support in the industry – true to the motto "Your Sound. Our Mission."

LD Systems' professional audio product lines include innovative, high-performance PA systems, advanced speakers and subwoofers for live events, installations or battery-powered outdoor use.

LD Systems wireless microphone and in-ear monitoring systems provide full freedom of movement and reliability for artists on stage and excellent speech intelligibility for speakers in conferences.

04



**ANNY<sup>®</sup> SERIES**

**MON G3  
SERIES**

06



**MAUI<sup>®</sup> G3 MIX**

08



10



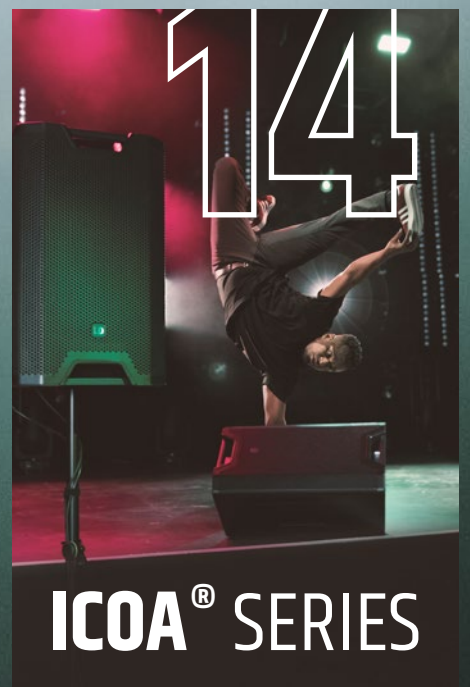
**MAUI<sup>®</sup> SERIES**

**DAVE G4X  
SERIES**

12



14



**ICOA<sup>®</sup> SERIES**

16



**CURV<sup>®</sup> 500**

22



**U300<sup>®</sup>  
U500<sup>®</sup>  
SERIES**

**STINGER<sup>®</sup> G3**

18



# ANNY® SERIES

TURN ANY PLACE INTO YOUR STAGE.

**NEW**

ANNY® - your battery-powered sound solution for truly anywhere: in the city, in the garden, at gatherings, at sports events, at school and dance events, in bars, at parties. Wherever you are, ANNY® provides professional sound and creates unforgettable moments. With a wide range of inputs, ANNY® enables a variety of setups with a mix of speech and music. With ANNY® at your side, you'll create a great atmosphere and professional sound - wherever you are. So go ahead and turn any place into your stage.



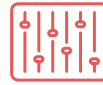
Long lasting battery



Portable & easy to carry



Up to two wireless microphones



Integrated mixer



Bluetooth



Loud & clear sound

**2X 6.3 MM / XLR COMBO,  
2X CINCH / 3.5 MM JACK (AUX)**



**AVAILABLE IN  
DIFFERENT COLORS**



**TILT BACK CABINET**  
TO SWITCH LISTENING ANGLES



**TRUE WIRELESS STEREO**

**INTEGRATED  
6-CHANNEL MIXER**  
WITH 3-BAND EQ,  
5 APPLICATION PRESETS  
(MUSIC, LIVE, VOCAL, ECO,  
FLAT) AND EFFECTS SUCH  
AS REVERB & DELAY

**REPLACEABLE  
BATTERY**  
TO EXTEND THE  
OPERATING TIME

**MAXIMUM PORTABILITY**  
DUE TO WHEELS AND TELESCOPIC HANDLE

**WIRELESS MODULES**  
HANDHELD & HEADSET INCL. BODYPACK

Bluetooth



### ANNY® 8\*

8" PORTABLE BATTERY-POWERED BLUETOOTH® PA LOUDSPEAKER WITH MIXER

System power (Peak)	160 W
Max. SPL (Peak)	117 dB
Frequency response (-10 dB)	53 - 20,000 Hz
Dimensions (W x H x D)	249 x 390 x 282 mm / 9.8 x 15.4 x 11.1 inch
Weight	8.8 kg / 19.4 lbs

\*AVAILABLE IN Q3/2024

Bluetooth



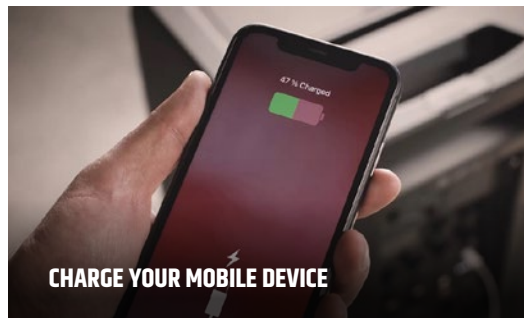
### ANNY® 10

10" PORTABLE BATTERY-POWERED BLUETOOTH® PA SYSTEM WITH MIXER

System power (Peak)	160 W
Max. SPL (Peak)	118 dB
Frequency response (-10 dB)	45 - 20,000 Hz
Dimensions (W x H x D)	361 x 566 x 300 mm / 14.2 x 22.3 x 11.8 inch
Weight	18.2 kg / 40.2 lbs



EXTRA STORAGE SPACE INSIDE ANNY® 10



CHARGE YOUR MOBILE DEVICE



PUT ANNY® ON A POLE

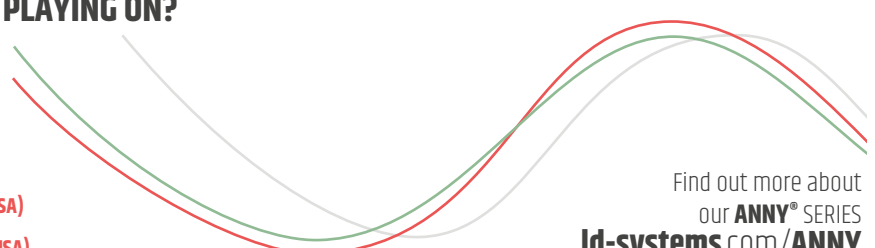


## MAKE YOUR VOICE HEARD

The ANNY wireless modules use Ultra High Frequency (UHF) to achieve an ultra-stable wireless range of up to an impressive 80m (250ft).

### \* WHAT FREQUENCY ARE YOU PLAYING ON?

- 823 - 832 MHz / 863 - 865 MHz: **B8**
- 655 - 679 MHz: **B6**
- 584 - 608 MHz: **B5**
- 514 - 542 MHz: **B5.1 (only available in USA)**
- 470 - 490 MHz: **B4.7 (only available in USA)**



Find out more about our ANNY® SERIES  
[ld-systems.com/ANNY](http://ld-systems.com/ANNY)



# MON G3 SERIES

One step beyond.



## POWERED COAXIAL STAGE MONITORS

Unlocking the potential of advanced stage monitoring for musicians, DJs and audio engineers. This thought guided our developers as they completely reimagined the concept of our MON stage monitor series to create the perfect package. A harmonious blend of advanced acoustics, clever features, intuitive operation, durable materials and the elegant LD Systems design propels the new MON G3 Series one step beyond.

**EXTRA STRONGSTEEL FRONT GRILL**  
FOR EFFECTIVE PROTECTION

**DISCREET ROTATABLE**  
**BRAND LOGO**

**BASS REFLEX PORT**

**PowerCon COMPATIBLE** FOR RELIABLE  
POWER CONNECTION & DAISY CHANING

**1.75" TITANIUM DIAPHRAGM**

**TUNABLE NOTCH FILTER**

**4 SOUND PRESETS**  
& 3-BAND EQ



Find out more about our **MON G3 SERIES**  
[ld-systems.com/MONG3](http://ld-systems.com/MONG3)

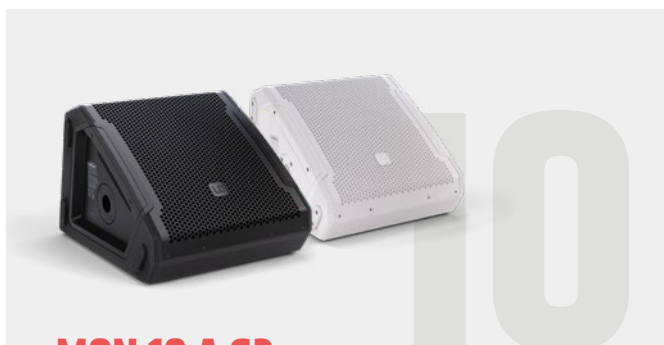


**MON 8 A G3**

### **MON 8 A G3**

8" POWERED COAXIAL STAGE MONITOR

System power (Peak)	1200 W
Max. SPL (Peak)	121 dB
Frequency response (-10 dB)	59 - 20,000 Hz
Dimensions (W x H x D)	340 x 278 x 368 mm / 13.4 x 10.9 x 14.5 inch
Weight	13.2 kg / 29.1 lbs



**MON 10 A G3**

### **MON 10 A G3**

10" POWERED COAXIAL STAGE MONITOR

System power (Peak)	1200 W
Max. SPL (Peak)	126 dB
Frequency response (-10 dB)	58 - 20,000 Hz
Dimensions (W x H x D)	380 x 305 x 426 mm / 15 x 12 x 16.7 inch
Weight	15.21 kg / 33.5 lbs



**MON 12 A G3**

### **MON 12 A G3**

12" POWERED COAXIAL STAGE MONITOR

System power (Peak)	1200 W
Max. SPL (Peak)	127 dB
Frequency response (-10 dB)	55 - 20,000 Hz
Dimensions (W x H x D)	425 x 315 x 453 mm / 16.7 x 12.4 x 17.8 inch
Weight	17.4 kg / 38.4 lbs



**MON 15 A G3**

### **MON 15 A G3**

15" POWERED COAXIAL STAGE MONITOR

System power (Peak)	1200 W
Max. SPL (Peak)	129 dB
Frequency response (-10 dB)	48 - 20,000 Hz
Dimensions (W x H x D)	505 x 340 x 517 mm / 19.9 x 13.4 x 20.4 inch
Weight	23.15 kg / 51 lbs

# MAUI® G3 MIX

SMALL NEVER SOUNDED SO BIG.

NEW

## Everything on-board!

With the MAUI G3 Mix versions, you no longer need a mixing console. The integrated 6-channel mixer offers you a wide range of possibilities thanks to mic / Hi-Z / line inputs. This means that you can connect microphones, guitars, basses, keyboards or various players directly and mix and filter the signals. By connecting two MAUI-G3-MIX systems via SysLink® to a stereo setup, the number of available analogue inputs is doubled. Of course, direct streaming via Bluetooth 5.0 is also available.

Menu control is extremely intuitive thanks to the control panel with LC display and three rotary-push controls. You can adjust effects, EQ, dynamics and monitor signals in just a few simple steps - even for each individual channel.



**CARDIOID COLUMN**  
FOR CONTROLLED DISPERSION  
IN THE LOW-MID FREQUENCIES

**MID-RANGE PHASE-PLUGS**  
FOR IMPROVED CONSTANT  
HORIZONTAL DIRECTIVITY

**ULTRA TOUGH IMPACT  
RESISTANT POLYUREA COATING**

**IN/OUT**  
INPUT: 2X MONO, 1X STEREO AND 1X BLUETOOTH  
OUTPUT: 2X MONITOR, 1X SYSTEM-OUT

**DEEPER BASS REPRODUCTION**  
DOWN TO 37 / 39 HZ THANKS TO 12"  
(MAUI 28 G3) OR 2 X 8" (MAUI 11 G3)  
SUBWOOFER

**FLOW-OPTIMISED  
BASS-REFLEX PORTS**



Find out more about our **MAUI® G3 MIX SERIES**  
[ld-systems.com/MAUIG3MIX](https://www.ld-systems.com/MAUIG3MIX)







## MAUI® 11 G3 MIX (W)

PORTABLE CARDIOID COLUMN PA SYSTEM WITH MIXER

System output (Peak)	1460 W
Max. SPL (Peak)	125 dB
Woofers	2 x 1" tweeter / 6 x 3.5" mid / 2 x 8" sub
Overall height	2052 mm / 80.8 inch
Weight	31.2 kg / 68.8 lbs



## MAUI® 28 G3 MIX (W)

COMPACT CARDIOID COLUMN PA SYSTEM WITH MIXER

System output (Peak)	2060 W
Max. SPL (Peak)	127 dB
Woofers	2 x 1" tweeter / 12 x 3.5" mid / 12" sub
Overall height	2052 mm / 80.8 inch
Weight	35.9 kg / 79.1 lbs



### INTEGRATED 6-CHANNEL MIXER

WITH ON-BOARD EFFECTS, 5-BAND EQ, DYNAMICS & FOOTSWITCH INPUT

### USER-FRIENDLY MENU CONTROL

EXTREMELY INTUITIVE THANKS TO THE CONTROL PANEL WITH COLOR DISPLAY AND THREE ROTARY-PUSH CONTROLS

### SYSLINK®

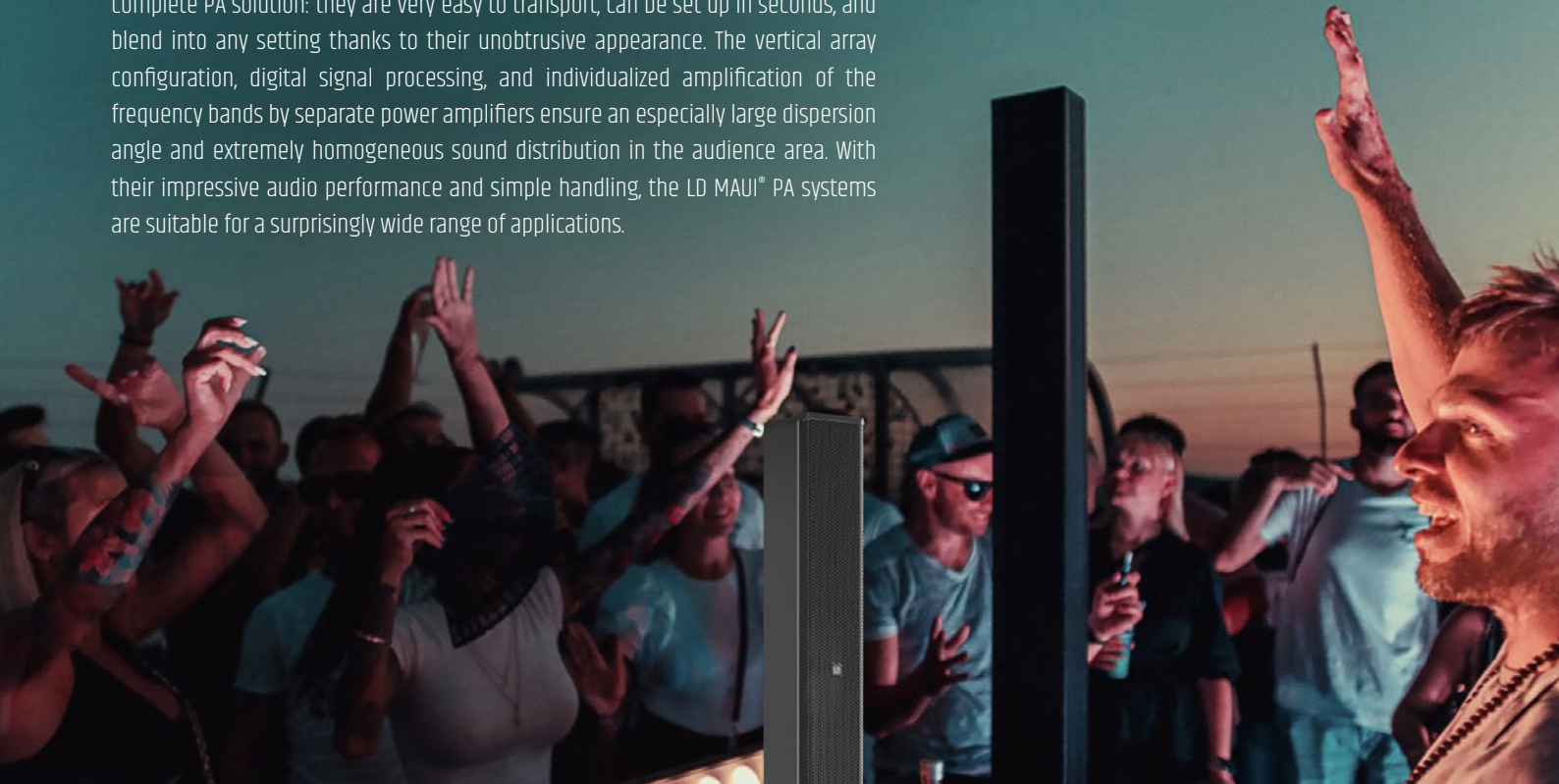
CONNECT TWO MAUI G3 MIX SYSTEMS VIA SYSLINK® TO CREATE A STEREO SETUP AND DOUBLE THE NUMBER OF AVAILABLE CHANNELS

### FREE APP

WITH EASY AND EXPERT MODE FOR REMOTE ADJUSTMENTS VIA SMARTPHONE AND TABLET

# MAUI® SERIES – Sleek. Easy. Mighty.

The powered MAUI® column systems by LD Systems offer an especially compact complete PA solution: they are very easy to transport, can be set up in seconds, and blend into any setting thanks to their unobtrusive appearance. The vertical array configuration, digital signal processing, and individualized amplification of the frequency bands by separate power amplifiers ensure an especially large dispersion angle and extremely homogeneous sound distribution in the audience area. With their impressive audio performance and simple handling, the LD MAUI® PA systems are suitable for a surprisingly wide range of applications.



**SUPER WIDE 120° HORIZONTAL DISPERSION**

**DynX® DSP (Gen. 2)**  
FOR DISTORTION-FREE SOUND  
EVEN AT MAXIMUM VOLUME

**BLUETOOTH® CONNECTIVITY**  
FOR HIGH QUALITY AUDIO STREAMING

**CARDIOID COLUMN**  
FOR CONTROLLED DISPERSION  
IN THE LOW-MID FREQUENCIES

**ALL MAUIS AVAILABLE  
IN BLACK OR WHITE**

**MAUI® 11 G3**



Find out more about our MAUI® SERIES  
[ld-systems.com/MAUI](https://www.ld-systems.com/MAUI)



## MAUI® 44 G2

CARDIOID POWERED COLUMN PA SYSTEM

System power (Peak)	3000 W
Max. SPL (Peak)	132 dB
Woofers	4 x 1" tweeter / 12 x 3.5" mid / 15" sub
Overall height	2256 mm / 88.8 inch
Weight	47.6 kg / 104.9 lbs



## MAUI® 28 G3

COMPACT POWERED COLUMN PA SYSTEM

System power (Peak)	2060 W
Max. SPL (Peak)	127 dB
Woofers	2 x 1" tweeter / 12 x 3.5" mid / 12" sub
Overall height	2052 mm / 80.8 inch
Weight	35.4 kg / 78 lbs



## MAUI® 11 G3

PORTABLE POWERED COLUMN PA SYSTEM

System power (Peak)	1460 W
Max. SPL (Peak)	125 dB
Woofers	2 x 1" tweeter / 6 x 3.5" mid / 2 x 8" sub
Overall height	2052 mm / 80.8 inch
Weight	30.7 kg / 67.7 lbs



## MAUI® 5

ULTRA PORTABLE POWERED COLUMN PA SYSTEM WITH MIXER

System power (Peak)	400 W
Max. SPL (Peak)	120 dB
Woofers	4 x 3" mid / 8" sub
Overall height	1985 mm / 78.1 inch
Weight	11.3 kg / 24.9 lbs



## MAUI® 5 GO

ULTRA-PORTABLE BATTERY-POWERED COLUMN PA SYSTEM - 5200 mAh

System power (Peak)	400 W
Max. SPL (Peak)	120 dB
Woofers	4 x 3" mid / 8" sub
Overall height	1985 mm / 78.1 inch
Weight	12.9 kg / 28.4 lbs



## MAUI® 5 GO 100

ULTRA-PORTABLE BATTERY-POWERED COLUMN PA SYSTEM - 3200 mAh

System power (Peak)	400 W
Max. SPL (Peak)	120 dB
Woofers	4 x 3" mid / 8" sub
Overall height	1985 mm / 78.1 inch
Weight	12.4 kg / 27.3 lbs

## MAUI® P900 (W/G/B)

POWERED COLUMN PA SYSTEM BY PORSCHE DESIGN STUDIO

System power (Peak)	2800 W
Max. SPL (Peak)	131 dB
Woofers	32 x 1" tweeter / 16 x 2.8" mid / 2 x 10" sub
Overall height	2173 mm / 85.6 inch
Weight	46 kg / 101.4 lbs



Expand your horizon at:  
[Id-systems.com/MAUIP900](http://Id-systems.com/MAUIP900)

# DAVE G4X SERIES

## PLUG. PLAY. PARTY.

### COMPACT 2.1 POWERED PA SYSTEMS

DAVE - a name that at LD Systems stands for powered 2.1 PA systems which offer everything DJs and musicians need: a powerful and universally applicable sound, sophisticated functions, and compact dimensions. With the DAVE G4X Series, LD Systems is now starting the revolution and developing the extremely popular PA systems from scratch. With its newly developed 2.1 design, the G4X Series forms a perfectly-matched, compact system with professional acoustic properties. Set it up, plug it in - and enjoy the sounds! In addition, the DAVE G4X Series now features an integrated 6-channel mixer including reverb, as well as enhanced connectivity options such as Bluetooth® and SPDIF.



#### MULTIBAND LIMITER

#### INTEGRATED 6 CHANNEL MIXER WITH EQ AND REVERB

#### BLUETOOTH® AND SPDIF SIGNAL INPUTS



#### CLASS D AMPLIFIER WITH PASSIVE COOLING TO PREVENT FAN NOISE

#### CLUSTER MODE NEW PRESET FOR CLUSTER SETUPS

Find out more about our **DAVE G4X SERIES**  
[ld-systems.com/DAVEG4X](http://ld-systems.com/DAVEG4X)



**DAVE 10 G4X**

## **DAVE 10 G4X**

COMPACT 2.1 POWERED SOUND SYSTEM

System power (Peak)	680 W
Max. SPL (Peak)	120 dB
Woofers	2 x 1" tweeter / 2 x double 4" mid / 10" sub
Frequency response (-10 dB)	37 - 20,000 Hz
Weight	24.5 kg / 54 lbs



**DAVE 12 G4X**

## **DAVE 12 G4X**

COMPACT 2.1 POWERED PA SYSTEM

System power (Peak)	1460 W
Max. SPL (Peak)	127 dB
Woofers	2 x 0.5" tweeter / 2 x 6.5" mid / 12" sub
Frequency response (-10 dB)	37 - 20,000 Hz
Weight	43.7 kg / 96.3 lbs

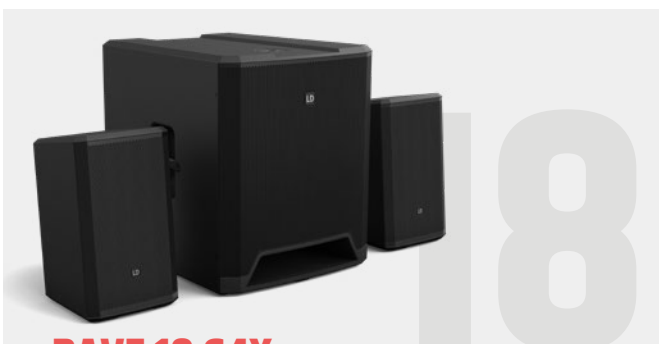


**DAVE 15 G4X**

## **DAVE 15 G4X**

COMPACT 2.1 POWERED PA SYSTEM

System power (Peak)	2060 W
Max. SPL (Peak)	130 dB
Woofers	2 x double 0.5" tweeter / 2 x 8" mid / 15" sub
Frequency response (-10 dB)	33 - 20,000 Hz
Weight	53.9 kg / 118.8 lbs



**DAVE 18 G4X**

## **DAVE 18 G4X**

COMPACT 2.1 POWERED PA SYSTEM

System power (Peak)	4000 W
Max. SPL (Peak)	134 dB
Woofers	2 x double 0.5" tweeter / 2 x 8" mid / 18" sub
Frequency response (-10 dB)	30 - 20,000 Hz
Weight	63.2 kg / 139.3 lbs

# ICOA® SERIES – Spin your sound right round



Enjoy the freedom of blasting the sound as loud and hard as you want for your audience. The horn-loaded woofer covers the complete bandwidth of sound with rich, deep bass. The choice is all yours: use the coaxial speakers as either full range loudspeakers or as monitor boxes - in 12" or 15" format. After all, both the powered and passive loudspeakers in the LD Systems ICOA® Series are true all-rounders: their coaxial configuration allows the BEM-optimised CD horn - and the logo - to be easily rotated 90°.

The result: you can perfectly position your powered loudspeaker at the right transmission angle. The sound is brilliant and super powerful in all positions, and the design is truly impressive, no matter if installed as a main system or horizontal monitor box. Every now and then all you need is a new perspective for greater freedom!

**4 ALUMINIUM HANDLES**  
WITH AN ERGONOMIC RUBBER SURFACE

**COAXIAL ROTATABLE  
HORN DESIGN**

**36 MM DUAL-TILT STAND ATTACHMENT**  
WITH 0° AND 5° TILT ANGLES AND  
55° FLOOR MONITOR ANGLE

**BASS REFLEX  
DESIGN**

Find out more about our **ICOA SERIES**  
[ld-systems.com/ICOA](http://ld-systems.com/ICOA)





## ICOA® 12

12" PASSIVE COAXIAL PA LOUDSPEAKER

System power (Peak)	1000 W
Max. SPL (Peak)	123 dB
Dimensions (W x H x D)	375 x 635 x 396 mm 14.8 x 25 x 15.6 inch
Weight	19.8 kg / 43.7 lbs



## ICOA® 12 A (BT)

12" POWERED COAXIAL PA LOUDSPEAKER  
(WITH BLUETOOTH)

System power (Peak)	1200 W
Max. SPL (Peak)	126 dB
Dimensions (W x H x D)	375 x 635 x 396 mm 14.8 x 25 x 15.6 inch
Weight	19.95 kg / 44 lbs



## ICOA® SUB 15 A

15" POWERED BASS REFLEX PA SUBWOOFER

System power (Peak)	1600 W
Max. SPL (Peak)	131 dB
Dimensions (W x H x D)	510 x 598 x 552 mm 20.1 x 23.5 x 21.7 inch
Weight	32.5 kg / 71.7 lbs



## ICOA® 15

15" PASSIVE COAXIAL PA LOUDSPEAKER

System power (Peak)	1000 W
Max. SPL (Peak)	125 dB
Dimensions (W x H x D)	416 x 695 x 415 mm 16.4 x 27.4 x 16.3 inch
Weight	24.7 kg / 54.5 lbs



## ICOA® 15 A (BT)

15" POWERED COAXIAL PA LOUDSPEAKER  
(WITH BLUETOOTH)

System power (Peak)	1200 W
Max. SPL (Peak)	128 dB
Dimensions (W x H x D)	416 x 695 x 415 mm 16.4 x 27.4 x 16.3 inch
Weight	24.3 kg / 53.6 lbs



## ICOA® SUB 18 A

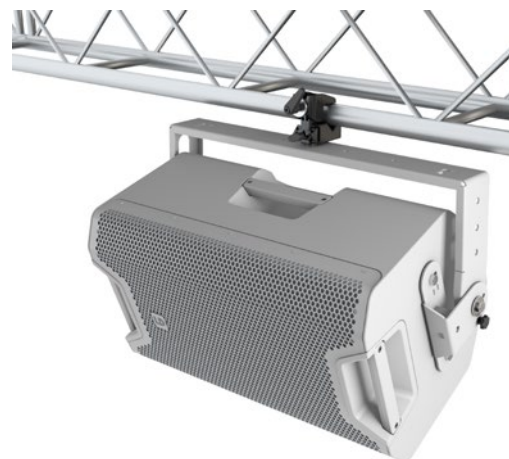
18" POWERED BASS REFLEX PA SUBWOOFER

System power (Peak)	2400 W
Max. SPL (Peak)	133 dB
Dimensions (W x H x D)	626 x 672 x 637 mm 24.6 x 26.5 x 25.1 inch
Weight	44.3 kg / 97 lbs

## EASY INSTALLATION

with the Universal Mounting Bracket for ICOA 12"/15"

- Universal bracket for horizontal or vertical wall attachment
- Truss mounting with optionally available clamp
- Easy-Click System
- Rotatable in 10° increments up to 180° with scaling indicator
- Cable feedthrough
- Load capacity up to 27 kg / 59.5 lbs



# CURV 500<sup>®</sup> SERIES – Array reinvented

With the patented CURV 500<sup>®</sup>, LD Systems presents the first really portable array with WaveAhead<sup>®</sup> technology for high-definition audio quality with an amazing sound pressure and excellent balance. Thanks to the expandable vertical and horizontal coverage, the system is completely scalable. The unibody aluminium construction of the CURV 500<sup>®</sup> array satellites sets new standards and is essential for the outstanding sound quality of the system. The unique SmartLink<sup>®</sup> plug-and-play adapter also offers numerous mounting options. For all-in-one comfort, the 4-channel mixer integrated in the CURV 500<sup>®</sup> provides a range of digital effects, as well as modern Bluetooth<sup>®</sup> wireless technology. Three sets are available for mobile and fixed installation. They feature a low weight and a wide, far-ranging sound dispersion. Thanks to optional extensions, the systems can be perfectly expanded further. Black and white housing designs for the AV Set allow for harmonious integration into the surrounding architecture.



## WAVEAHEAD<sup>®</sup> TECHNOLOGY SYMMETRICAL HORIZONTAL DISPERSION

WIDE DISPERSION OF MID  
AND HIGH FREQUENCIES



VERTICAL TWEETER ARRAY

INTEGRATED  
4-CHANNEL  
MIXING DESK







Bluetooth



Bluetooth



## CURV 500® TS

PORTABLE ARRAY SYSTEM  
TOURING SET

System power (Peak)	2000 W
Max. SPL (Peak)	131 dB
Woofers	18 x 1" tweeter / 6 x 4" mid / 15" sub
Subwoofer (W x H x D)	600 x 437 x 587 mm 23.6 x 17.2 x 23.1 inch
Weight	48.2 kg / 106.3 lbs

## CURV 500® ES

PORTABLE ARRAY SYSTEM  
ENTERTAINER SET

System power (Peak)	920 W
Max. SPL (Peak)	128 dB
Woofers	12 x 1" tweeter / 4 x 4" mid / 10" sub
Subwoofer (W x H x D)	325 x 383 x 491 mm 12.8 x 15.1 x 19.3 inch
Weight	26.8 kg / 59.1 lbs

## CURV 500® PS

PORTABLE ARRAY SYSTEM  
POWER SET

System power (Peak)	1840 W
Max. SPL (Peak)	134 dB
Woofers	24 x 1" tweeter / 8 x 4" mid / 2 x 10" sub
Subwoofer (W x H x D)	325 x 383 x 491 mm 12.8 x 15.1 x 19.3 inch
Weight	59.1 kg / 130.3 lbs



## CURV 500® AVS (W)

PORTABLE ARRAY SYSTEM  
A/V SET

System power (Peak)	720 W
Max. SPL (Peak)	122 dB
Woofers	3 x 1" tweeter / 1 x 4" mid / 1 x 10" sub
Subwoofer (W x H x D)	325 x 383 x 491 mm / 12.8 x 15.1 x 19.3 inch
Weight	22.8 kg / 50.3 lbs



Find out more about our **CURV 500 SERIES**  
[ld-systems.com/CURV500](http://ld-systems.com/CURV500)



# STINGER® G3 SERIES

## MULTIFUNCTIONAL PA SPEAKERS & SUBWOOFERS

Exceptional sound, reliable performance and unparalleled value across the board - that's LD Systems' STINGER® G3 Series. Real workhorses for demanding applications, these loudspeakers have been engineered to provide truly professional sound reinforcement solutions. The STINGER® G3 line includes active and passive models that are simply outstanding in their class. Custom designed drivers with high power handling and BEM modelled waveguides deliver immaculate audio quality, extended low frequency response and coherent coverage. Sporting lightweight Class D power stages, active STINGER® G3 models are capable of huge sound pressure levels. The multi-purpose tops feature up to a massive 500 watts RMS output and carefully tailored presets for flat response, fullrange, satellite or floor monitor applications.

**36 MM DUAL-TILT POLE MOUNT**  
FOR 0° OR 5° MOUNTING ANGLES

**BEM OPTIMIZED HF WAVEGUIDE**  
FOR UNIFORM COVERAGE

**APPLICATION PRESETS**  
FOR QUICK FREQUENCY  
RESPONSE CONTOURING

**BIRCH PLY CABINET**  
WITH ULTRA RUGGED  
POLYUREA FINISH

**UP TO 800 W RMS POWER**  
AND 134 DB MAX SPL

**LD SYSTEMS DYNX®**  
**DSP TECHNOLOGY**  
FOR DISTORTION-FREE  
PERFORMANCE

**HIGH POWER BASS REFLEX PA SUBWOOFERS**  
WITH CARDIOID SETUP PRESETS



## STINGER® 8 G3

2-WAY PASSIVE 8" PA LOUDSPEAKER

Load rating (RMS)	250 W
Max. SPL (Peak)	119 dB
Dimensions (W x H x D)	270 x 457 x 290 mm 10.6 x 17.9 x 11.4 inch
Weight	9.9 kg / 21.8 lbs



## STINGER® 10 G3

2-WAY PASSIVE 10" PA LOUDSPEAKER

Load rating (RMS)	300 W
Max. SPL (Peak)	121 dB
Dimensions (W x H x D)	325 x 527 x 318 mm 12.8 x 20.7 x 12.5 inch
Weight	11.5 kg / 25.4 lbs



## STINGER® 12 G3

2-WAY PASSIVE 12" PA LOUDSPEAKER

Load rating (RMS)	400 W
Max. SPL (Peak)	125 dB
Dimensions (W x H x D)	390 x 627 x 377 mm 20.1 x 23.5 x 21.7 inch
Weight	19.4 kg / 71.7 lbs



## STINGER® 15 G3

2-WAY PASSIVE 15" PA LOUDSPEAKER

Load rating (RMS)	500 W
Max. SPL (Peak)	127 dB
Dimensions (W x H x D)	480 x 737 x 455 mm 18.9 x 29 x 17.9 inch
Weight	25.7 kg / 60.6 lbs



## STINGER® 28 G3

2-WAY PASSIVE 2x8" PA LOUDSPEAKER

Load rating (RMS)	400 W
Max. SPL (Peak)	125 dB
Dimensions (W x H x D)	270 x 756 x 290 mm 10.6 x 29.8 x 11.4 inch
Weight	19.3 kg / 42.5 lbs



## STINGER® SUB 15 G3

PASSIVE 15" BASS REFLEX PA SUBWOOFER

Load rating (RMS)	600 W
Max. SPL (Peak)	127 dB
Dimensions (W x H x D)	576 x 477 x 624 mm 22.7 x 18.8 x 24.6 inch
Weight	29.7 kg / 65.5 lbs



## STINGER® SUB 18 G3

PASSIVE 18" BASS REFLEX PA SUBWOOFER

Load rating (RMS)	800 W
Max. SPL (Peak)	129 dB
Dimensions (W x H x D)	677 x 547 x 740 mm 26.7 x 21.5 x 29.1 inch
Weight	40.6 kg / 89.5 lbs

## HIGH POWER FOR YOUR PASSIVE SPEAKERS **DSP 44 K**



Find out more about our **STINGER G3** SERIES  
[ld-systems.com/STINGERG3](http://ld-systems.com/STINGERG3)



## STINGER® 8 A G3

2-WAY ACTIVE 8" PA LOUDSPEAKER

Load rating (RMS)	300 W
Max. SPL (Peak)	125 dB
Dimensions (W x H x D)	270 x 457 x 290 mm 10.6 x 17.9 x 11.4 inch
Weight	10.5 kg / 23.2 lbs



## STINGER® 10 A G3

2-WAY ACTIVE 10" PA LOUDSPEAKER

Load rating (RMS)	300 W
Max. SPL (Peak)	127 dB
Dimensions (W x H x D)	325 x 527 x 318 mm 12.8 x 20.7 x 12.5 inch
Weight	12.7 kg / 28 lbs



## STINGER® 12 A G3

2-WAY ACTIVE 12" PA LOUDSPEAKER

Load rating (RMS)	500 W
Max. SPL (Peak)	131 dB
Dimensions (W x H x D)	390 x 627 x 377 mm 20.1 x 23.5 x 21.7 inch
Weight	20.1 kg / 44.3 lbs



## STINGER® 15 A G3

2-WAY ACTIVE 15" PA LOUDSPEAKER

Load rating (RMS)	500 W
Max. SPL (Peak)	133 dB
Dimensions (W x H x D)	480 x 737 x 455 mm 18.9 x 29 x 17.9 inch
Weight	26.8 kg / 59.1 lbs



## STINGER® 28 A G3

2-WAY ACTIVE 2x8" PA LOUDSPEAKER

Load rating (RMS)	500 W
Max. SPL (Peak)	131 dB
Dimensions (W x H x D)	270 x 756 x 290 mm 10.6 x 29.8 x 11.4 inch
Weight	20.5 kg / 45.2 lbs



## STINGER® SUB 15 A G3

ACTIVE 15" BASS REFLEX PA SUBWOOFER

Load rating (RMS)	450 W
Max. SPL (Peak)	133 dB
Dimensions (W x H x D)	576 x 477 x 624 mm 22.7 x 18.8 x 24.6 inch
Weight	31.9 kg / 70.3 lbs



## STINGER® SUB 18 A G3

ACTIVE 18" BASS REFLEX PA SUBWOOFER

Load rating (RMS)	800 W
Max. SPL (Peak)	135 dB
Dimensions (W x H x D)	677 x 547 x 740 mm 26.7 x 21.5 x 29.1 inch
Weight	42.6 kg / 93.9 lbs

## EASY INSTALLATION

WITH OUR WALL AND TRUSS MOUNT ACCESSORIES

- Swivel Wall Mount (8/10/12/15/28)
- Tilt- and Swivel Wall Mount (8/10/12/15/28)
- Truss Mount Clamp Set (8/10)
- Truss Mount Bracket (12/15)



Truss Clamp Set



Tilt- and Swivel Wall Mount



Truss Mount Bracket



Swivel Wall Mount

# STINGER SETS



## LOUNGE SET

2 X 8" PA SPEAKER | 1 X 15" SUBWOOFER

Providing easy portability, this compact set is terrific for small gigs and functions that require excellent music and speech reinforcement.

Applications:  
DJs | solo entertainers | singer-songwriters | private functions

Audience Size\*: 150 music | 200 speech **Active / Passive**



## EVENT SET

2 X 10" PA SPEAKER | 2 X 15" SUBWOOFER

This set is the perfect all-round package for small to medium-sized gigs and functions providing a tight and punchy low end from the two subwoofers.

Applications:  
small bands | DJs | private functions

Audience Size\*: 200 music | 300 speech **Active / Passive**



## POWER SET

2 X 12" PA SPEAKER | 2 X 18" SUBWOOFER

Excellent for live clubs and touring bands, this set is a superb choice wherever highly dynamic music reinforcement with plenty of power and punch is of prime importance.

Applications:  
bands | live clubs | large private functions | corporate events  
AV presentations

Audience Size\*: 250 music | 350 speech **Active / Passive**



## IMPACT SET

2 X 15" PA SPEAKER | 4 X 18" SUBWOOFER

Delivering a massive low-end with punch and clarity, this set is ideal for outdoor sound reinforcement. With a quartet of subwoofers and two 15" tops, it easily covers medium-sized gigs at town fairs, street festivals and in marquees.

Applications: outdoor sound reinforcement for bands | DJs | large private functions

Audience Size\*: 300 music | 400 speech **Active / Passive**



## GALA SET

2 X DOUBLE 8" PA SPEAKER | 2 X 18" SUBWOOFER

Including a pair of slim, low-profile satellites and two subwoofers, this set is a great option for events that require excellent speech intelligibility and extended coverage.

Applications:  
gala events | corporate conferences | large private functions

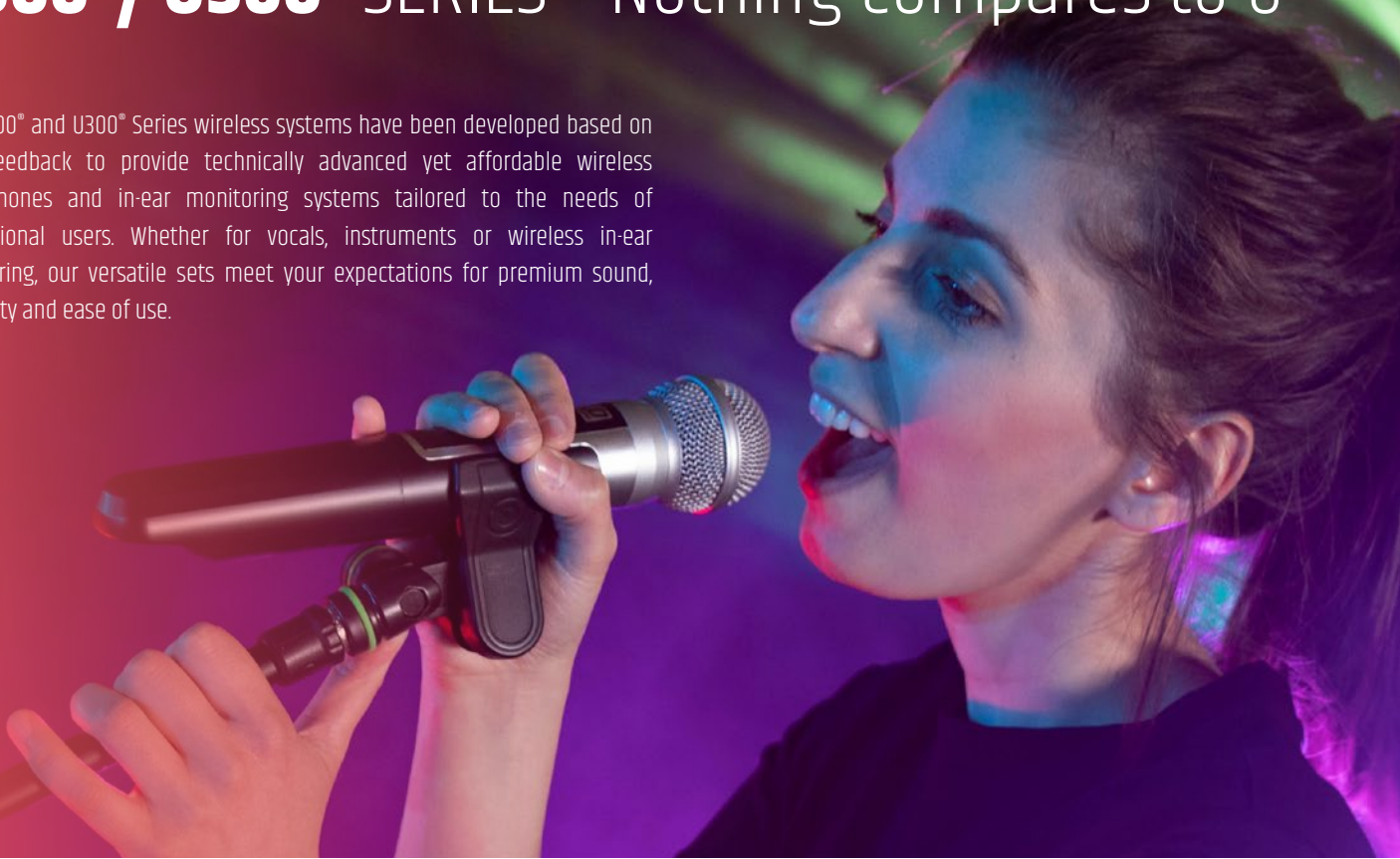
Audience Size\*: 250 music | 350 speech **Active / Passive**



\*NOTE: Audience size specifications are approximate only. The actual numbers may vary depending on room acoustics and environment.

# U300® / U500® SERIES - Nothing compares to U

The U500® and U300® Series wireless systems have been developed based on user feedback to provide technically advanced yet affordable wireless microphones and in-ear monitoring systems tailored to the needs of professional users. Whether for vocals, instruments or wireless in-ear monitoring, our versatile sets meet your expectations for premium sound, reliability and ease of use.



**SOUND QUALITY WITH UP TO 100 METERS OR 300 FEET OF REACH**

**ONE BODYPACK, WIDE RANGE WITH MINI XLR INPUT, WITH A THREE-POSITION LEVEL SWITCH**

**UP TO 12 SYSTEMS SIMULTANEOUSLY**



**INTERCHANGEABLE MIC HEADS**



Find out more about our **U500** SERIES  
[ld-systems.com/U500](https://www.ld-systems.com/U500)





### U3XX\* HHD

WIRELESS MICROPHONE SYSTEM WITH DYNAMIC HANDHELD MICROPHONE

Channels	12
Frequency response	55 Hz - 16 KHz
Rated HF output power	10 mW



### U3XX\* HHD 2

DUAL WIRELESS MICROPHONE SYSTEM WITH 2X DYNAMIC HANDHELD MICROPHONE

Channels	12
Frequency response	35 Hz - 16 KHz
Rated HF output power	10 mW



### U3XX\* IEM

IN-EAR MONITORING SYSTEM

Channels	12
Operating modes	Mono/Stereo
Frequency response	50 Hz - 16 KHz
Rated HF output power	10 mW



### U5XX\* HHD

WIRELESS MICROPHONE SYSTEM WITH DYNAMIC HANDHELD MICROPHONE

Channels	96 (8 groups of 12 channels)
Frequency response	60 Hz - 16 KHz
Rated HF output power	Variable (2/10/30mW)



### U5XX\* HHD 2

DUAL WIRELESS MICROPHONE SYSTEM WITH 2X DYNAMIC HANDHELD MICROPHONE

Channels	96 (8 groups of 12 channels)
Frequency response	60 Hz - 16 KHz
Rated HF output power	Variable (2/10/30mW)



### U5XX\* IEM

IN-EAR MONITORING SYSTEM

Channels	96 (8 groups of 12 channels)
Operating modes	Stereo/Focus/Mono
Frequency response	40 Hz - 16 KHz
Rated HF output power	Variable (2/10/30mW)



**ALSO AVAILABLE WITH BODYPACK AS GUITAR, HEADSET, LAVALIER OR BRASS INSTRUMENT MIC VERSION.**

### \* WHAT FREQUENCY ARE YOU PLAYING ON?

- 470 - 490 MHz: **U304.7 / U504.7** (only available in USA)
- 514 - 542 MHz: **U305.1 / U505.1** (only available in USA)
- 548 - 607 MHz **U305 / U505**
- 655 - 679 MHz **U306 / U506**
- 823 - 832 MHz / 863 - 865 MHz **U308 / U508**
- 1785 - 1800 MHz **U518**

Find out more about our **U300 SERIES**  
[Id-systems.com/U300](http://Id-systems.com/U300)



**your sound.**  
our mission.

**LDsystems** 



[facebook.com/ldsystems](https://facebook.com/ldsystems)  
[instagram.com/ld\\_systems\\_official](https://instagram.com/ld_systems_official)  
[youtube.com/ldsystemsvideos](https://youtube.com/ldsystemsvideos)

**ld-systems.com**

**LD Systems is a brand of the Adam Hall Group**  
© 2024 Adam Hall Group. All rights reserved